



Gipton Neighbourhood Improvement Plan 2013/14

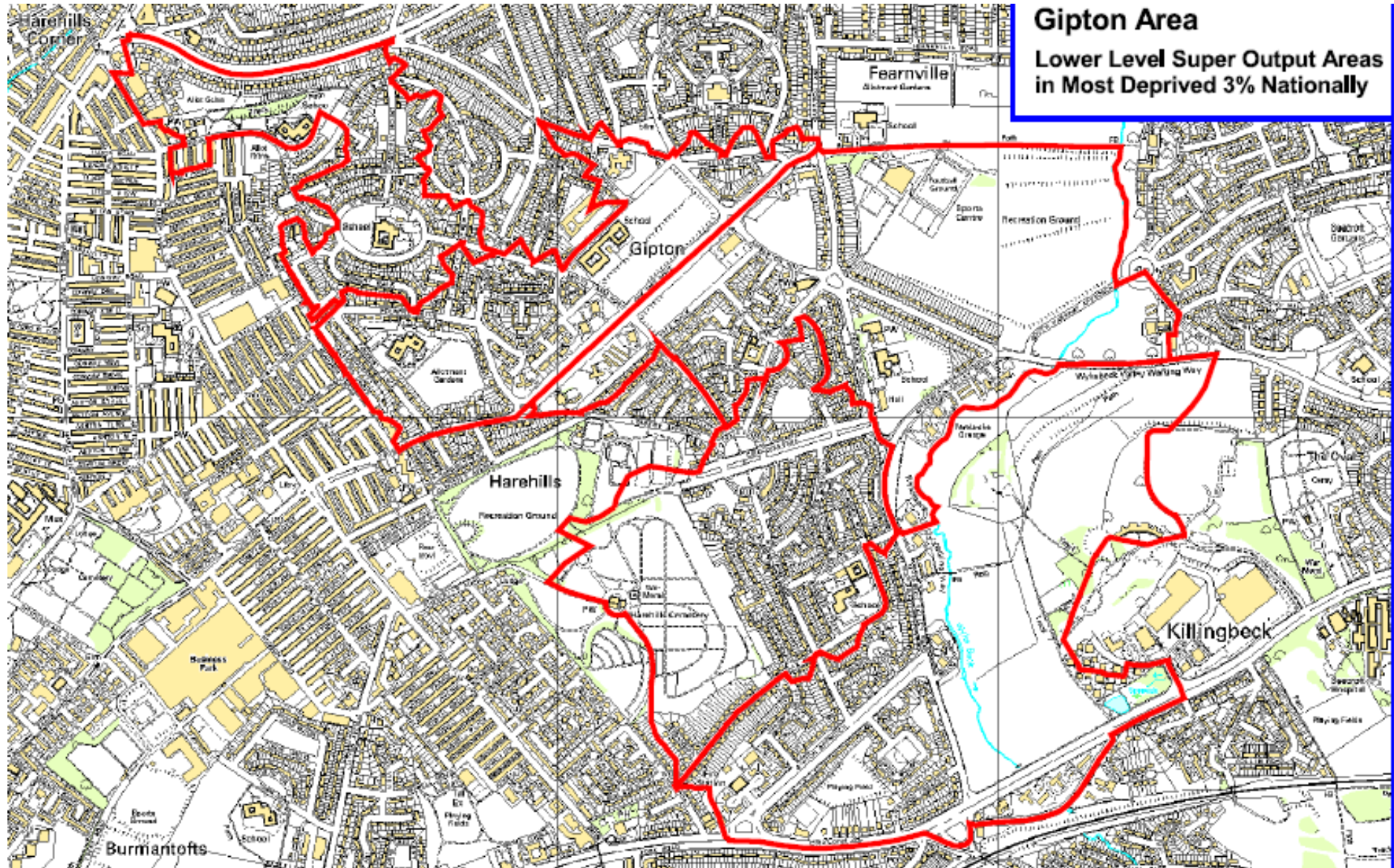
For further information, contact:

Joanne Buck
Neighbourhood Manager, Killingbeck & Seacroft, Gipton.
0113 3367633
joanne.buck@enehl.org.uk

Contents

Map of the Gipton Priority Neighbourhood	Page 3
Overview of Neighbourhood Index data	Pages 4 & 5
Overview of the Area	Pages 6 & 7
Comparison of Neighbourhood Index data 2011 and 2012	Pages 7,8 & 9
Overview of partnership working	Pages 10 & 11
Identified Priorities for 2013/14	Pages 12 -15
Action Plan	Pages 16 - 19
Appendix 1 – Gipton North Neighbourhood Index 2012 profile	Page 20
Appendix 2 – Gipton South Neighbourhood Index 2012 profile	Page 21

Map of Gipton Neighbourhood Management Area



Introduction to Gipton Neighbourhood Improvement Plan 2013/14

Neighbourhood Improvement Plan – This document provides an overview of the latest statistical profile for Gipton. The NIP analyses the latest Neighbourhood Index data and compares the previous year's statistics. This highlights the emerging issues in the neighbourhood which need to be addressed. Both the Community Leadership Team and Local Management Team have been consulted on the data produced and have agreed the emerging priorities for next twelve months.

Neighbourhood Index Leeds is split into 108 Middle Super Output Areas (MSOAs), which are used as the basis for the NI data. Each MSOA in Leeds has a population of 7,000. Gipton is made up of two MSOAs, as follows:

- **E02002376 – Gipton North**
- **E02002389 – Gipton South**

The Neighbourhood Index profiles for these areas are attached as appendices to this document.

The Neighbourhood Index 2012 is made up of data from the following time periods:

Economic Activity

- % of working age population who are claiming Job Seekers Allowance – Snapshot at April 2012
- % of working age population who are claiming Incapacity Benefit / Severe Disablement Allowance / Employment Support Allowance - Snapshot at November 2012
- % of working age population who are lone parents claiming Income Support - Snapshot at November 2012

Low Income

- Number of children under the age of 16 or 16 – 18 years olds still in full time education, in working age households, in receipt of Income Support or Job Seekers Allowance and claiming Housing / Council Tax benefit - Snapshot at November 2012
- Number of working age households claiming Housing / Council Tax benefit but not in receipt of Income Support or Job Seekers Allowance - Snapshot at November 2012
- Number of older age (Where the claimant, partner or both are above the age of 60) households in receipt of Housing / Council Tax benefit Snapshot at November 2012
- Number of liability orders issued for non-payment of Council Tax - 2012/13 financial year

Education

- % of pupils in secondary schools who are persistent absentees – 2011/12 academic year

- % of pupils achieving level 4+ in Key Stage 2 English and Maths – 2012 exam cohort
- % of pupils achieving 5 or more GCSEs at grades A*-C, including English and Maths - 2011 exam cohort
- % of pupils achieving 78+ points plus 6+ in Communications, Language and Literacy (CLL) and in Personal, Social and Emotional (PSE) at Foundation Stage - 2012 exam cohort
- % of young people who are not in education, employment or training (NEET) - Quarterly average NEET figure (November 2012 – January 2013)

Community Safety

- Number of crimes and other acts against individuals - 1st April 2011 to 31st March 2012
- Number of acquisitive property crimes - 1st April 2011 to 31st March 2012
- Number of environmental property crimes and disorders - 1st April 2011 to 31st March 2012
- Number of other community disorders - 1st April 2010 to 31st March 2012

Environment

- Number of fly tipping clearance jobs attended by City Services - April 2011 to March 2012
- Number of graffiti clearance jobs attended by City Services - April 2011 to March 2012
- Number of service requests received by HEAS dealing with waste issues - April 2011 to March 2012

Health

- Circulatory Disease Mortality in under 75's per 100,000 population - 3 Year Aggregate 2008 -2010
- Cancer Mortality in under 75's per 100,000 population - 3 Year Aggregate 2008 -2010
- Low Birth Weight all births (still and live) weighing less than 2500 grams - 5 Year Aggregate 2008 -2010
- Number of adults receiving community based services provided through the adult social care process - 1st April 2010 to 31st March 2012

Housing

- Average Purchase Price (residential properties) - June 2011 – May 2012
- Ratio of house prices to income - June 2011 – May 2012
- Housing Turnover (Number of changes in Council Tax status of properties) - 1 April 2011 to 31 March 2012
- Empty Properties (90+ days in total) - 1 April 2011 to 31 March 2012

Introduction to Gipton Priority Neighbourhoods

E02002376: Gipton North: The area is located in the Inner East. It is bounded by Easterly Road to the north and Oak Tree Drive to the south and includes the St Wilfred's and Ambertons. It lies within the Gipton Priority Neighbourhood.

The age breakdown shows a much higher than average proportion of children and young people. The area has a diverse ethnic population with over 26% of people coming from BME communities and almost 10% of the population are Muslim.

53% of households are either renting from the local authority (through an ALMO) or from another registered social landlords. Semi-detached housing accounts for 60% of the stock in the area with terraced housing accounting for a further 20%. 71% of properties are classified in Council Tax Band A and 21% in Band B.

This area houses the Henry Barran Community Centre and GIPSIL community organisation. The schools in the area are Hovingham Primary School, St Augustine's Roman Catholic Primary School, Woodlands Primary School and Oakwood Primary School, North Ease SILC (Oakwood Lane).

This neighbourhood forms part of the EASEL regeneration area. Wyke Beck cuts through the area where the wild life includes kingfishers.

Gipton North is ranked 17 on the combined Neighbourhood Index. Across the domains the scores are generally in line with or lower than the city averages, but particularly so in the Economic Activity and Low Income domains where the area scores are significantly lower than those for the city, and the area is ranked 8 and 7 respectively. The scores for the Housing, Health and Environment are slightly above the City averages.

E02002389: Gipton South: The area is located in the Inner East. It is bounded by Oak Tree Drive to the north, the Wyke Beck valley to the east, York Road to the south and Harehills Road to the west. It lies within the Gipton Priority Neighbourhood.

The age breakdown shows higher than average proportions of children, young people and older people. The BME population broadly reflects the city average at 10%.

56% of households renting from the local authority (through an ALMO). Semi-detached housing accounts for 48% of the stock with purpose built flats accounting for a further 30%. 81% of properties are classified in Council Tax Band A and 13% in Band B.

This area contains Fearnville Sports Centre. The schools in the area are St Nicholas' Roman Catholic Primary School and Wykebeck Primary School.

The historic Harehills Cemetery is located here as is Harehills Park, with a playground and various pitches and courts. A fire station is located on Gipton Approach.

This neighbourhood forms part of the EASEL regeneration area. It contains a large green space with Wyke Beck running through it.

Gipton South is ranked 13 on the combined Neighbourhood Index. Across the domains the scores are generally lower than the city averages, but particularly so in the following domains; Economic Activity (ranked 10), Low Income (ranked 13); and Health (ranked 1). The only exceptions are the Housing and Environment domains where the area scores are slightly higher.

Neighbourhood Index Domains – 2011/12

The section below provides an overview comparison of the Neighbourhood Index domain data from 2011 and 2012 profiles. The domain areas will look at the 4 MSOAs that make up the Gipton priority neighbourhood. The neighbourhoods will be referred to their MSOA numbers throughout this section.

This section will be used to identify the domain areas affecting the overall scoring of the neighbourhood. From this information, actions to create a positive impact in the neighbourhood will be developed as part of the NIP action plan to be implemented by the LMT and CLT.

From 2009, the overall rankings of the MSOAs have changed as follows:

MSOA	Ranking 2011	Ranking 2012	Variation
E02002376 – Gipton North	19	17	-2
E02002389 – Gipton South	17	13	-4

Economic Activity

E02002376: Gipton North - This area consistently performs below the City average. There was a significant improvement in 2011 but this has not been sustained in to 2012, which has seen significant increases in both Job Seekers Allowance and Incapacity Benefit claimant rates. The claimant rate for lone parents in receipt of Income Support has however fallen significantly in 2012.

E02002369 – Gipton South - This area consistently performs well below the City average, although there has been a continual and significant overall improvement. However the claimant rates for Job Seekers Allowance and Incapacity Benefit have both increased in 2012, the area currently has the third highest rate for Incapacity Benefit in the City.

Low Income

E02002376: Gipton North - This area generally performs well below the City average and there has been a continual and significant deterioration in the domain score over the years, with an increasing number of working households claiming benefit and an increasing number of children in workless households. There was a significant reduction in the number of liability orders issued in 2011 and this has been sustained in 2012

E02002369 – Gipton South - This area generally performs well below the City average and there has been a continual and significant deterioration in the domain score, due in part to the increasing number of households that are claiming benefit. The number of older person households in receipt of benefit is currently the second highest in the City. There was a significant reduction in the number of liability orders issued in 2011 and this lower number has been sustained in 2012. .

Education

E02002376: Gipton North - This area consistently performs below the City average, although there has been a significant improvement in 2012, with NEETs being the only indicator not to have improved in that year (the area currently has the second highest rate of NEETs in the City).

E02002369 – Gipton South - This area consistently performs well below the City average, although the overall domain score has shown a notable improvement in 2012, largely due to significant improvements in the Foundation Stage and Key Stage 4 attainment levels. The other three indicators all shows some measure of deterioration in 2012, most significantly so in the case of Key Stage 2.

Community Safety

E02002376: Gipton North - This area consistently performs at or below the City average, but has shown significant improvements in both 2011 and 2012.

E02002369 – Gipton South - This area consistently performs at or below the City average, although there has been a continual and significant overall improvement, with crime numbers for all indicators now well below the levels recorded in the baseline year of 2009.

Environment

E02002376: Gipton North - This area consistently performs at or below the City average but has shown significant improvement in 2012.

E02002369 – Gipton South - This area consistently performs at or below the City average. There was a notable dip in performance in 2010, due in part to a very significant increase in fly-tipping clearances in that year. Performance improved in 2011 as the number of fly-tipping clearances reduced dramatically, and the improvement has been sustained in to 2012.

Health

E02002376: Gipton North- This area consistently performs at or below the City average but is showing continual overall improvement. Performance in 2012 has been more varied with two indicators showing significant improvement and two significant declines.

E02002369 – Gipton South - This area consistently performs at or below the City average. There was a notable improvement overall in 2010 but this has not been sustained in subsequent years, and the area currently is ranked the worst in the City for the domain as a whole and has the third highest cancer mortality rate in the City.

Housing

E02002376: Gipton North - This area consistently performs at or below the City average and there has been a significant improvement in the domain score in 2012, due in part to improvements in the two prices related indicators. Purchase price fell in 2010 (£111,998) and 2011 (£104,353) but recovered in 2012 (£126,209) to level out the price recorded in 2009.

E02002369 – Gipton South - This area consistently performs at or below the City average, although there has been a continual overall improvement. Purchase price fell in 2010 (£102,902), recovered slightly in 2011 (£108,650) and again in 2012 (£111,110).

Partnership Working and Delivery mechanisms

The Community Leadership Team - This is made up of representatives of the local community, it includes parent Governors from local schools, representatives from local recognised tenants and residents associations, representatives from the local business community and elected community champions. This meeting is chaired by a local elected member and the group meet at least 4 times per year. The general purpose of this meeting is to oversee the development of the Neighbourhood Improvement Plan in particular around identifying local priorities that require action, helping to measure the success of interventions and crucially to take a lead in communicating to the wider community what activities are taking place and what improvements have been achieved in the local areas. This approach improves public awareness in the partnership and ensures that it is responsive to public needs.

Community First Panel – Community first is a government initiative, which is delivered through the Community Development Foundation (CDF). They work with several organizations to deliver the program, including supermarket chain Asda. Harehills and Gipton ward have been awarded £135,640 over a four year period for projects to provide small amounts of funding to small groups, enabling people in specified deprived wards to improve their area. We are now in the third year of the funding stream. To avoid duplication and increase transparency, Harehills and Gipton panel members are made up from Community Leadership Team representatives in Gipton, active local residents in Harehills and a local elected member.

Priority Neighbourhood Local Management Team– This is made up of local service providers operational /middle managers and chaired by the Neighbourhood Manager. This group will work with the Neighbourhood Improvement Plan and drive forward operational improvements in the priority neighbourhood. Members of this group are selected from local service providers and it is recommended that members of this group cannot also be members of the Community Leadership Team as this could create a conflict of interests.

Inner East Area Committee – This will provide a strategic reporting mechanism for the priority neighbourhood and will assist in ensuring the buy in of partner agencies and signing off the project and NIP for a twelve month period. The Area Committee will receive 6 monthly progress reports on the status of the project and an annual assessment and comparison of statistics alongside each years NIP.

Links to Strategic Partnerships – Regular updates on the progress of the NIP, LMT and CLT will be fed through to the East North East Officer Co-Ordination Group to ensure strategic buy in to the priorities and the ways of working in the neighbourhood. Updates will also be fed through to the ENE Health & Wellbeing Partnership, Divisional Community Safety Partnership.

Tasking teams – To ensure the delivery of actions from the NIP, the Gipton tasking team will be an integral mechanism to tackle crime and grime issues in the locality. We also look at addressing issues which could affect vulnerable people and families, including school attendance and NEETs.

Guidance and Support partnership - A Preventative Tasking approach has recently been introduced to the Team, named guidance and support. The guidance and support approach is to have an in-depth look at offending nominals, vulnerable children and families, victims and perpetrators of Domestic violence with a view to offer additional support, diversionary and enforcement tactics.

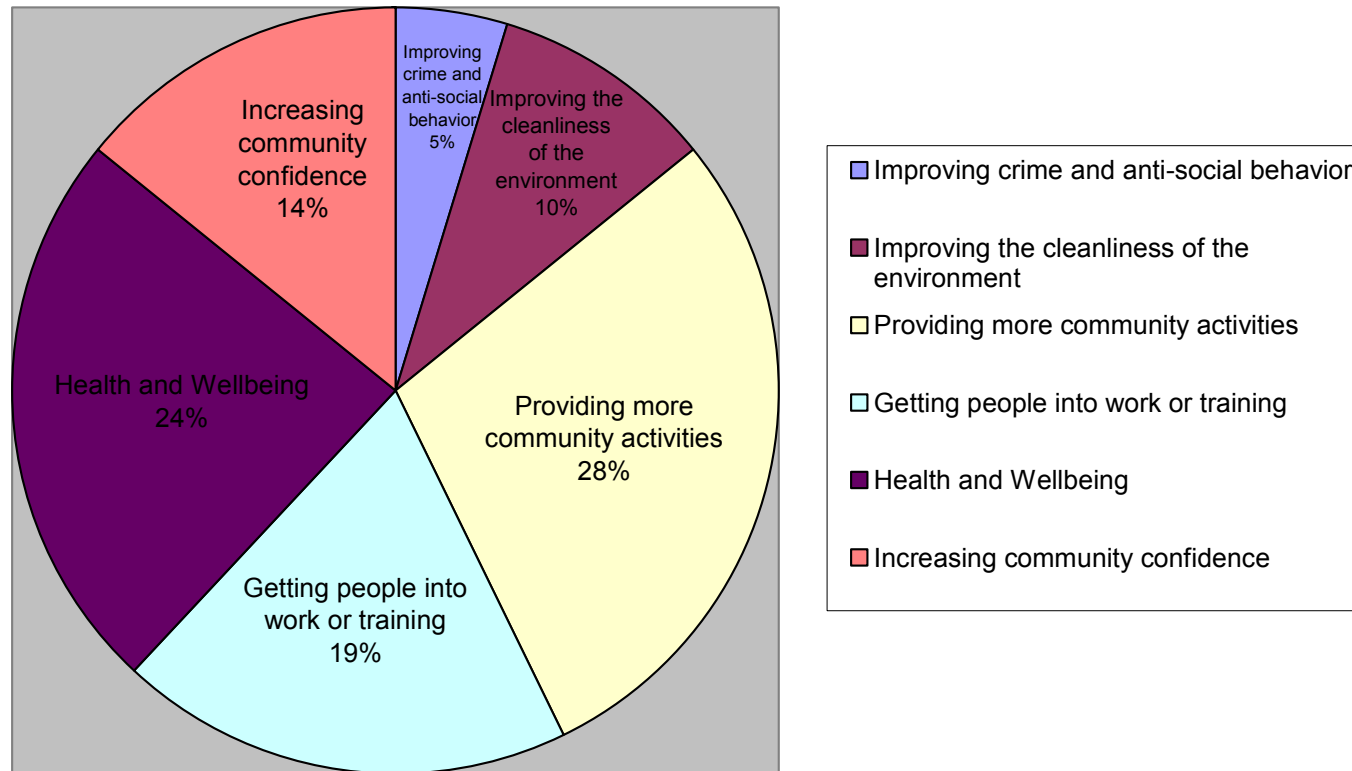
Guidance and Support partnership also focuses on the Families First Agenda, which is intended to ensure that area priorities and resources are focused on improving services to those children, young people and their families who are at most risk of poor outcomes, Looked After Children and those at risk of being accommodated, young people who are NEET or at risk of becoming so, those children and young people who are persistently absent from school.

Equality Framework – To ensure that all activity which is delivered through the NIP is accessible for all sections of the community, a light touch equality impact assessment will be undertaken during the development of the NIP action plan. Equality impact assessments will also be carried out when any projects in the neighbourhood is being undertaken. This is in line with Leeds City Council's commitment to achieve the excellent rating for equalities.

Identified Priority Themes for Gipton Priority Neighbourhood#

To capture people's views about what they see as top priority for where they live, a survey was distributed to all members of the Community Leadership Team to disseminate to their members. It must be said that this consultation was a light touch which captured the views from local resident groups, youth services, local schools and members of the parish. The purpose of the survey was to find out about residents views about where they live and the local services which they receive. Of the 39 respondents, the priorities were as follows:

GIPTON



The section below outlines the five key priorities for the Gipton Neighbourhood Improvement Plan 2012/13.

1. Crime and Anti social behaviour

E02002376 – Gipton North

The community safety ranking 2011 was 29; the score for this domain has remained static in 2012 at 29. Crimes against a person fell from 334 to 322 in 2012, acquisitive property crime reduced from 365 to 293 and community disorders fell from 597 to 456.

E02002389 – Gipton South

The community safety ranking 2011 was 24 this has fallen in 2012 to 22. Crimes against a person fell from 363 to 308 from the same time period; acquisitive property crime fell slightly from 397 to 383 and community disorders reduced from 655 to 517.

2. Reducing worklessness persistent Absenteeism /NEETs

The NI NEET data is a snap shot in time from Nov 2011– Jan 2012 therefore can not be relied upon solely to demonstrate the direction of travel throughout the year. When measured against the City average both areas within the ward have a higher proportion of young people living in the area.

E02002364 – Gipton North:

NEET figures rose from 13.10% to 16.52%

E02002369 – Gipton South:

NEET figures rose from 12.98 to 13.07%

E02002376 – Gipton North

Persistent absentees decreased from 11.92% to 9.40%

E02002389 – Gipton South

Persistent absenteeism rose slightly from 11.17% to 11.42%

E02002376 – Gipton North

Children in workless households increased from 624 to 725. JSA claimants rose 7.98% to 10.46%, incapacity benefit claimants rose slightly from 10.23% to 10.90%

E02002389 – Gipton South

Children in workless households increased slightly from 588 to 593. JSA claimants rose from 8.31% to 8.69%, incapacity benefit claimants increased from 12.00% to 12.37%

3. Supporting vulnerable people and families with complex needs

To embed the Top 100 methodology and troubled families initiative, we have introduced multi agency guidance and support panel to assess families first, target appropriate resources and ensure agencies are accountable for support and guidance to meets the family needs.

4. Increase working families, reduce low income families an children in workless household

To address high worklessness and low income within the ward, GIPSIL have been awarded funding to deliver a Job club in the ward

The project will [start](#) April 13 and it will run for 12 months. The Job club will support between 8 and 10 people at any one time in each Work Club. Sessions will last three hours with further time dedicated to promotion and networking with local partners.

Support will be targeted towards those families experiencing long term unemployment to get them back into work. The club will also be open to young people who are NEET and vulnerable people. The scheme will offer training and support to enable local people to access local job opportunities and support to help them move nearer the job market.

The clubs will provide a supportive learning forum with dedicated 1:1support on hand to explore existing and new skills, interests and work options. Practical issues will be addressed like setting up an email account if needed and writing and uploading CV's onto the Universal Job Match site. Support will be available to discuss what employers want, complete application forms and develop interview skills, gaining peer support and confidence.

To eliminate barriers to education, employment or training for young people , regular 'sweeps' are carried out to known young people who are not engaged in education, employment or training

Drop in centre for Jobs and Skills now in place at Henry Barran Centre and Compton Centre. Two Jobs and Skills advise and support staff also targets the area.

5. Increase resident's influence and community cohesion

The Community Leadership Team has assisted with the community cohesion and residents influence, this is now embedded as part of the Team Gipton development.

Harehills and Gipton ward will receive £135,640 from the Community First Foundation, over a four year period. A panel has been recruited from the CLT membership to assist local community groups applying for funding and assessing bids submitted. The CF funding will help local groups become sustainable within the community, promote cohesion and raise awareness of the Community leadership Team. The following groups have received funding to deliver local activities:

Gipton Together	2,500.00
Hamara	2,500.00
GETAWAY GIRLS	2,500.00
Archway Resource Centre (a renew Leeds project)	2,388.00
Leeds Ahead	900.00
Kidz Klub	831.00
Community Action To Change Harehills (CATCH)	1,750.00
Rainbow Hearts Women's Group	2,477.00
Grand Total	15,846.00

6. Providing Community Activities

Young people have been consulted on what activities they would like to see delivered in the summer holidays. Wellbeing and cluster budgets are pooled to create as package of events and activities to meet the outcomes of the consultation. These activities are in addition to universal activities already in place for young people.

Several activities and groups are making use of the Henry Barran centre, including Gipton together; youth services a line dancing group.

ACTION PLAN

Reduce the levels of Crime Burglary and ASB						
Priority	Action to be taken	Delivery Partners	Success measure	Outputs	Financial Resources	Delivery Timescale
Reduce levels of Burglary	Use OBA action plan to identify vulnerable people streets and target harden properties					
	Identify perpetrators of burglary					
Reduce levels of ASB involving young people	LASBT to utilise Hosing tenancy tools					
	Develop school holiday program					
	Increase youth activities across the ward and in					

	hot spot areas					

Reducing worklessness, persistent absenteeism /NEETs						
Priority	Action to be taken	Delivery Partners	Success measure	Outputs	Financial Resources	Delivery Timescale
Improve access to employment opportunities	Implement a Job club at GIPSIL family centre					
	Organise a Job fare in the community					
	Identify apprenticeship opportunities					
	AIO to target persistent absenteeism					
	Utilise NEET sweeps to identify training opportunities					

Supporting vulnerable people and families with complex needs						
Priority	Action to be	Delivery Partners	Success	Outputs	Financial	Delivery

	taken		measure		Resources	Timescale
Identify vulnerable people / families	Vulnerable families / children discussed at Guidance and support.					
Identify reasons for vulnerability	Engage in local support groups Use resources available to support people					

Promote physical health and Emotional Wellbeing - Lung health / COPD / stopping smoking

Priority	Action to be taken	Delivery Partners	Success measure	Outputs	Financial Resources	Delivery Timescale
Reduce levels of childhood obesity	Work with cluster to identify a package of support for schools					
Support people to stop smoking and increase awareness of the dangers of						

niche tobacco						
Improve the life quality of older residents						

Increase resident's influence and community cohesion

Priority	Action to be taken	Delivery Partners	Success measure	Outputs	Financial Resources	Delivery Timescale

Providing Community Activities

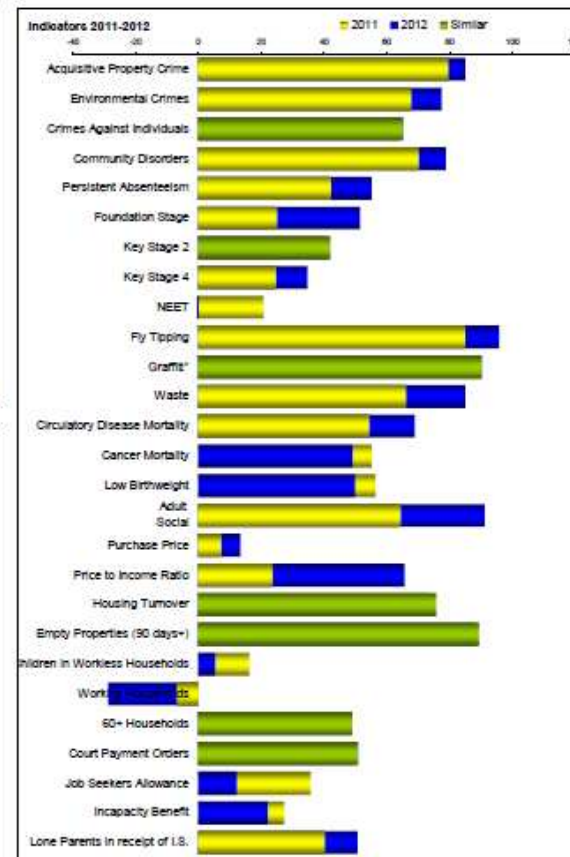
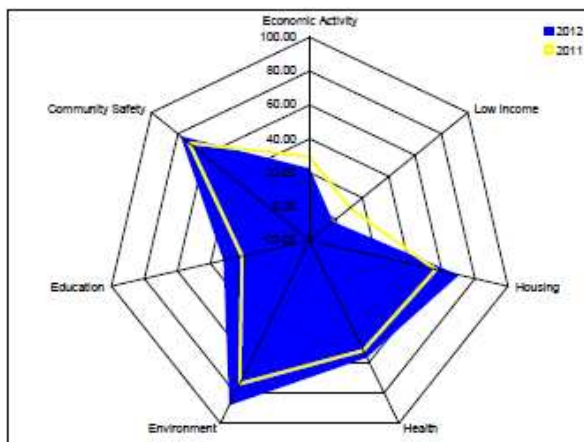
Priority	Action to be taken	Delivery Partners	Success measure	Outputs	Financial Resources	Delivery Timescale

Leeds Neighbourhood Index

E02002376: Gipton North

Domain Summary	2011		2012		Change	
	Rank	Score	Rank	Score	Rank	Score
Economic Activity	13	29.34	8	22.68	-5	-6.66
Low Income	11	10.44	7	-2.29	-4	-12.73
Housing	32	56.30	55	70.40	23	14.09
Health	38	52.27	40	56.90	2	4.63
Environment	25	74.10	43	88.36	18	14.26
Education	12	20.83	18	32.23	6	11.39
Community Safety	29	71.45	29	77.92	0	6.46
Leeds Index	19	20.88	17	22.63	-2	1.75

Indicators	2011		2012		Change	
	Data	Score	Data	Score	Data	Score
Job Seekers' Allowance	7.38%	35.72	10.46%	12.25	2.48	-23.47
Incapacity Benefit	10.23%	27.35	10.90%	22.11	0.67	-6.24
Lone Parent Income Support	4.56%	40.05	3.75%	50.84	-0.81	10.80
Children in Workless Households	642	18.21	725	5.32	83	-10.85
Households Receiving In-Work Benefits	300	-6.64	380	-28.79	80	-22.14
60+ Households in Receipt of Benefits	336	48.90	339	48.35	3	-0.55
Court Payment Orders	301	49.81	296	50.76	-5	0.95
Average Purchase Price	£104,353	7.25	£128,209	13.41	£21,856	6.15
Price / Income Ratio	4.77	23.43	7.60	66.67	2.83	42.24
Housing Turnover	12.95%	75.63	13.63%	73.75	0.68	-1.88
Empty Homes (90+ days)	4.32%	89.24	4.58%	87.80	0.26	-1.45
Circulatory Disease Mortality	111.36	54.29	82.34	68.88	-29.02	14.50
Cancer Mortality	127.37	55.06	137.83	49.15	10.46	-5.91
Low Birthweight	7.45	56.40	8.14	49.95	0.7	-6.44
Adult Social Care	105	64.25	57	91.08	-48	26.82
Fly Tipping	73	84.85	25	95.78	-48	10.94
Graffiti*	13	90.09	13	90.09	*	*
Waste Issues	112	65.97	51	84.84	-61	18.87
Persistent Absenteeism	11.82%	42.18	9.40%	55.05	-2.52	12.89
Foundation Stage	28.21%	24.83	47.71%	51.42	19.50	26.59
Key Stage 2	61.46%	41.97	80.63%	40.50	-0.83	-1.47
Key Stage 4	32.00%	24.68	39.09%	34.79	7.09	10.11
NEET	13.10%	20.68	16.52%	-0.43	3.42	-21.09
Acquisitive Property Crime	365	79.49	293	84.84	-72	5.35
Environmental Crimes	170	67.65	124	77.44	-46	9.79
Crimes Against Individuals	334	63.60	322	65.04	-12	1.44
Community Disorders	597	70.04	456	78.82	-141	8.78



Notes:

* Due to changes in the service, small area data on the number of graffiti jobs cleared by the Council is not available for 2011/12. To maintain the integrity of the Neighbourhood Index the data for 2010/11 has been rolled forward into the system so the change appears as zero.

Domain Summary: Shows the rank, score and changes for each domain, for each year.

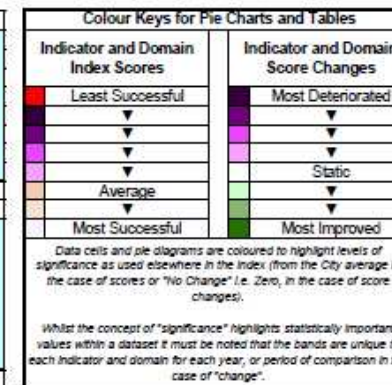
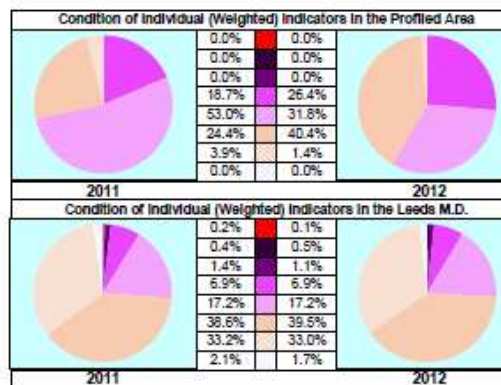
Indicators: Shows the score, underlying data and changes for each indicator, for each year.

Bar Chart (Score Change Across Domains): A graphical representation of the change in the domain scores between this year and last. N.B. an increase in score indicates improvement, a decrease in score indicates deterioration.

Bar Chart (Indicators 2011-2012): A graphical representation comparing the indicator scores for each year. N.B. indicators showing minimal change are represented by green bars.

Spidergram: A graphical representation comparing the domain scores for each year.

Pie Charts: Graphical representations of the weighted proportions of individual indicators falling into each band.



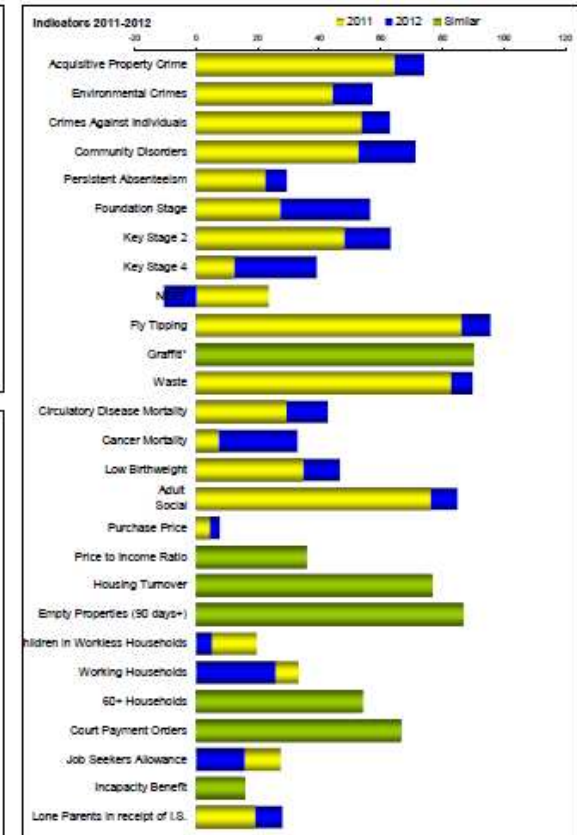
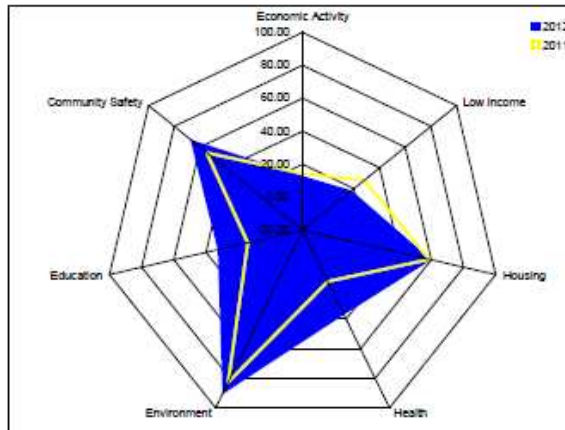
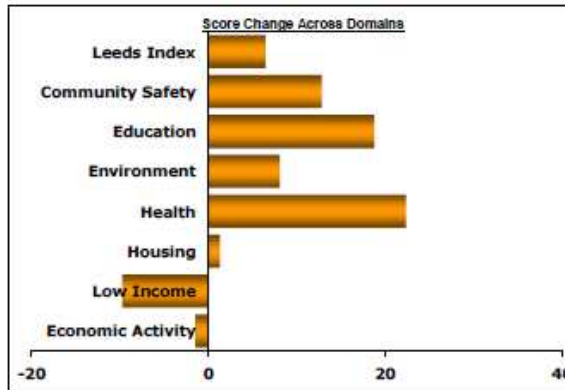


Leeds Neighbourhood Index

E02002379: Seacroft South

Domain Summary	2011		2012		Change	
	Rank	Score	Rank	Score	Rank	Score
Economic Activity	5	14.40	4	12.98	-1	-1.42
Low Income	22	28.00	21	18.27	-1	-9.73
Housing	37	58.77	24	60.04	-13	1.27
Health	2	14.89	14	37.06	12	22.17
Environment	32	82.63	49	80.67	17	-1.96
Education	4	14.11	19	32.83	15	18.72
Community Safety	7	54.70	14	67.51	7	12.81
Leeds Index	13	14.42	16	20.86	3	6.43

Indicators	2011		2012		Change	
	Data	Score	Data	Score	Data	Score
Job Seekers' Allowance	8.85%	27.50	10.09%	15.76	1.24	-11.74
Incapacity Benefit	11.70%	15.83	11.84%	14.76	0.14	-1.08
Lone Parent Income Support	6.16%	10.14	5.47%	29.01	-0.68	8.87
Children in Workless Households	816	19.81	727	5.10	111	-14.51
Households Receiving In-Work Benefits	192	33.21	212	25.83	20	-7.38
60+ Households in Receipt of Benefits	308	54.04	312	53.31	4	-0.74
Court Payment Orders	216	66.03	213	66.60	-3	0.57
Average Purchase Price	£94,000	4.34	£105,700	7.63	£11,700	3.29
Price / Income Ratio	5.59	35.67	5.60	35.82	0.01	0.15
Housing Turnover	12.88%	75.79	12.52%	76.78	-0.36	0.99
Empty Homes (90+ days)	4.88%	88.19	4.77%	86.80	-0.11	0.81
Circulatory Disease Mortality	161.25	29.22	134.53	42.85	-26.72	13.43
Cancer Mortality	212.12	7.17	166.50	32.94	-45.62	26.77
Low Birthweight	9.72	34.89	8.50	48.53	-1.2	11.84
Adult Social Care	84	75.98	68	84.92	-16	8.94
Fly Tipping	88	85.98	25	95.88	-43	9.88
Graffiti	13	90.09	13	90.09	*	*
Waste Issues	58	82.65	35	89.79	-23	7.12
Persistent Absenteeism	15.82%	22.23	14.42%	29.38	-1.40	7.15
Foundation Stage	29.90%	27.14	51.40%	56.46	21.50	29.32
Key Stage 2	64.84%	47.96	73.47%	63.25	8.63	15.29
Key Stage 4	23.23%	12.19	42.16%	39.16	18.93	26.97
NEET	12.63%	23.56	18.15%	-10.45	5.52	-34.01
Acquisitive Property Crime	588	64.40	438	74.06	-150	9.66
Environmental Crimes	280	44.24	219	57.22	-61	12.98
Crimes Against Individuals	417	53.63	340	62.88	-77	9.25
Community Disorders	876	52.68	580	71.10	-296	18.44



Notes:

* Due to changes in the service, small area data on the number of graffiti jobs cleared by the Council is not available for 2011/12. To maintain the integrity of the Neighbourhood Index the data for 2010/11 has been rolled forward into the system so the change appears as zero.

Domain Summary: Shows the rank, score and changes for each domain, for each year.

Indicators: Shows the score, underlying data and changes for each indicator, for each year.

Bar Chart (Score Change Across Domains): A graphical representation of the change in the domain scores between this year and last. N.B. an increase in score indicates improvement, a decrease in score indicates deterioration.

Bar Chart (Indicators 2011-2012): A graphical representation comparing the indicator scores for each year. N.B. indicators showing minimal change are represented by green bars.

Spidergram: A graphical representation comparing the domain scores for each year.

Pie Charts: Graphical representations of the weighted proportions of individual indicators falling into each band.

